



The Escape II

*Rough sawn logs and interior walls give **The Escape II** that real rustic log cabin feeling! Truly an exceptional vacation cabin at a truly exceptional price.*



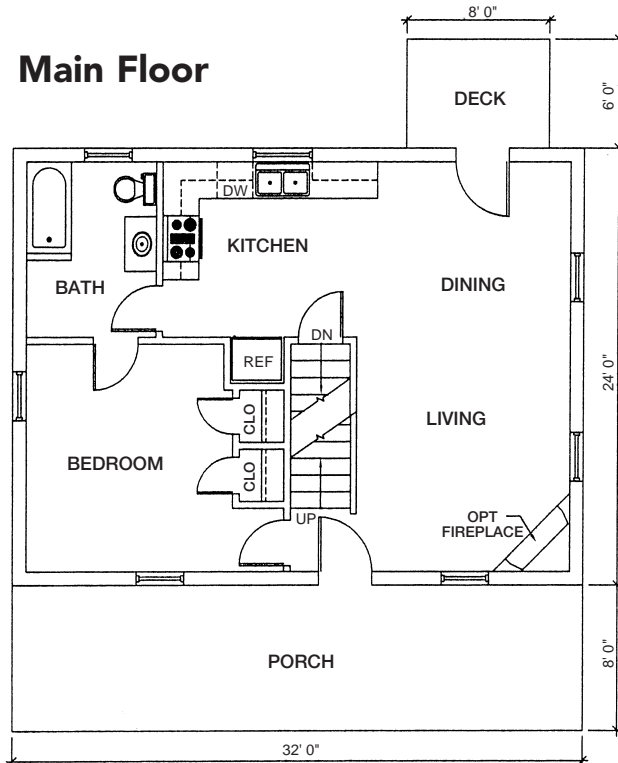
Thoughtfully designed and carefully constructed, **The Escape II** offers —

- One bedroom
- One sleeping loft
- One bath
- Open living and dining area with vaulted ceiling and exposed rafters
- Front porch and deck
- Full basement

*Log homes, like **The Escape II**, have a natural beauty that exists in harmony with their surroundings. Unlike other dwellings, log homes become more beautiful with age.*



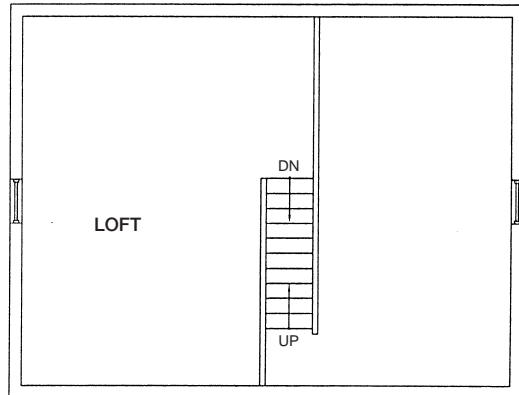
Main Floor



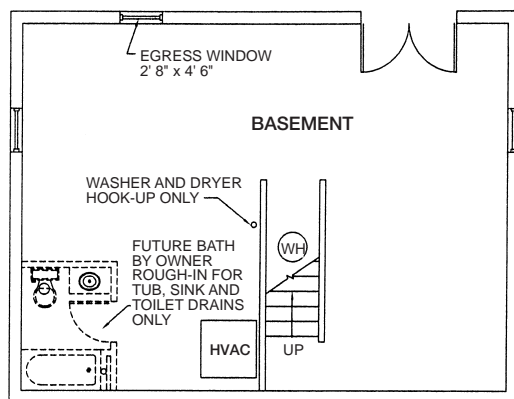
The “Escape II” log cabin in The Reserve at Fairystone features —

- Size — 24' x 32'
- Full concrete basement with rock exterior
- Exterior walls — 6" x 12" rough-sawn white pine logs with German dovetail corners
- Interior walls — 1" x 8" white pine
- Rafters — exposed 4" x 8" Douglas Fir beams
- Ceiling — 1" rough sawn white pine with rigid insulation
- Loft beams — 4" x 8" white pine
- Metal roofing with 40 year baked-on enamel coating
- Main flooring — tongue & groove pre-finished oak
- Loft flooring — tongue & groove pine
- Square post and picket railings — standard
- Exterior stains by Sikkenes or Woodguard wood preservers
- M & W 5/8" insulated glass windows
- Interior doors — solid white pine
- Exterior doors — 3/0 wood with glass
- Pine kitchen cabinets
- Laminate counter tops in kitchen
- Heat pump for heating and cooling
- 200 AMP electrical service
- All electrical appliances (range, dishwasher, microwave and refrigerator)
- 50 gallon electric water heater
- Washer and dryer hookup
- 6' x 8' treated back deck
- 8' x 32' covered front porch

Loft



Basement



**Builder Retains the Right to Substitute for Equal or Better Quality.*