

The Hideout I

*Rough sawn logs and interior walls give **The Hideout I** that real rustic log cabin feeling! Truly an exceptional vacation cabin at a truly exceptional price.*



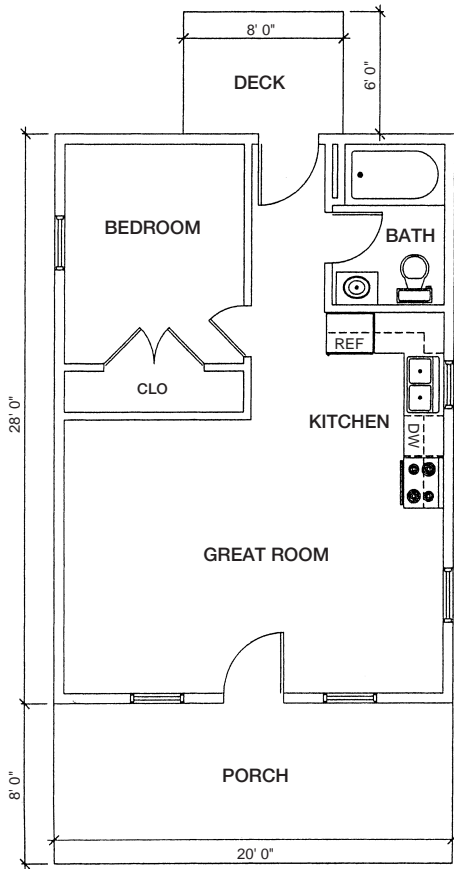
Thoughtfully designed and carefully constructed, **The Hideout I** offers —

- One bedroom
- One bath
- Open living and dining area with vaulted ceiling
- Ample kitchen
- Front porch and deck
- Optional full basement

*Log homes, like **The Hideout I**, have a natural beauty that exists in harmony with their surroundings. Unlike other dwellings, log homes become more beautiful with age.*



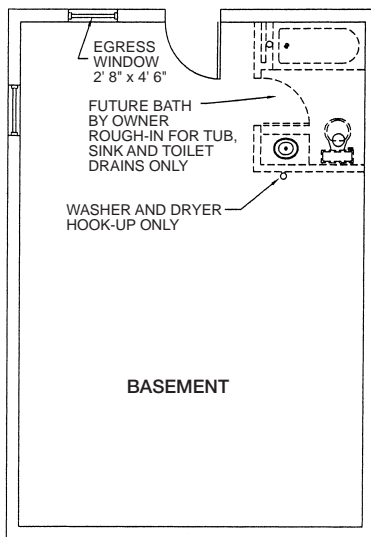
Main Floor



The “Hideout I” log cabin in The Reserve at Fairystone features —

- Size — 20' x 28'
- Rock faced block foundation (full basement optional)
- Exterior walls — 6" x 12" rough-sawn white pine logs with German dovetail corners
- Interior walls — 1" x 8" white pine
- Truss rafters with vaulted ceiling
- Ceiling — 1" x 8" white pine
- Metal roofing with 40 year baked-on enamel coating
- Flooring — tongue & groove pre-finished oak
- Square pickets and post railings standard
- Exterior stains by Sikkens or Woodguard wood preservers
- M & W 5/8" insulated glass windows
- Interior doors — solid white pine
- Exterior doors — 3/0 wood with glass
- Pine kitchen cabinets
- Laminate counter tops in kitchen
- Heat pump for heating and cooling
- 200 AMP electrical service
- All electrical appliances (range, dishwasher, microwave and refrigerator)
- 50 gallon electric water heater
- Washer and dryer hookup
- 6' x 8' treated back deck
- 8' x 20' covered front porch

Optional Basement



**Builder Retains the Right to Substitute for Equal or Better Quality.*