



The Hideaway II

Looking for that distinctive log cabin from where you and your family or friends can play hard or just take it easy? **The Hideaway II** at The Reserve at Fairystone is just the place.

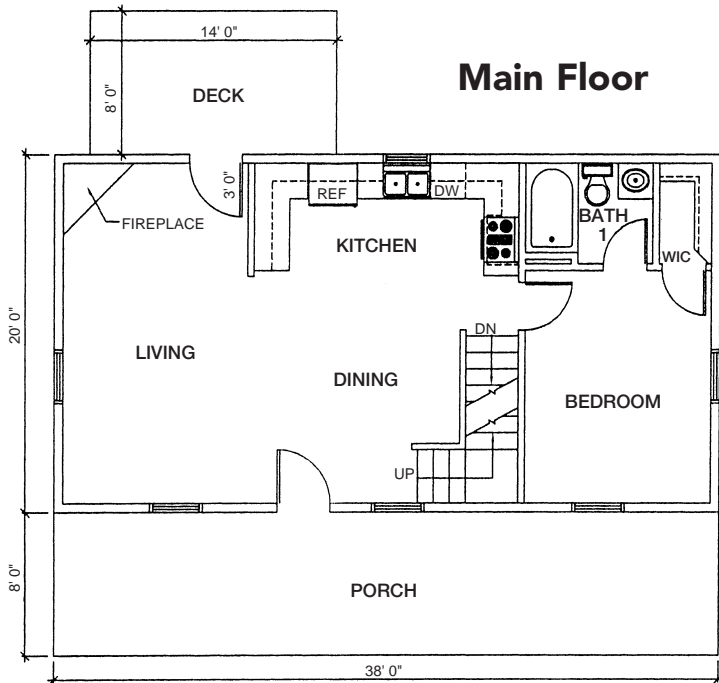


Thoughtfully designed and carefully constructed, **The Hideaway II** offers —

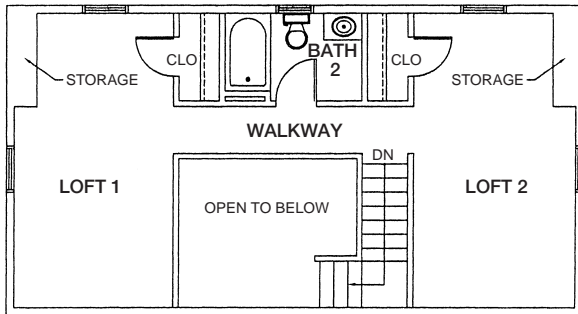
- One downstairs bedroom
- Two sleeping lofts
- Two baths
- Spacious kitchen
- Open living and dining area with vaulted ceiling and exposed rafters
- Front porch and large deck
- Full basement

*Log homes, like **The Hideaway II**, have a natural beauty that exists in harmony with their surroundings. Unlike other dwellings, log homes become more beautiful with age.*

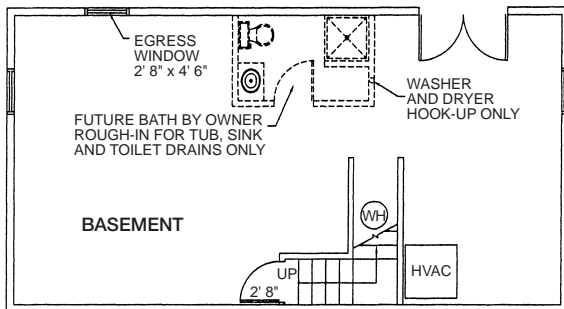




Loft



Basement



The "Hideaway II" log cabin in The Reserve at Fairstone features —

- Size — 20' x 38'
- Full concrete basement with rock exterior
- Exterior walls — 6" x 12" white pine logs with German dovetail corners
- Interior Walls — 1" x 12" V-groove white pine
- Rafters — exposed 4" x 8" Douglas Fir beams
- Ceiling — 1" x 8" V-groove white pine with rigid insulation
- Metal roofing with 40 year baked-on enamel coating
- Main floor — tongue and groove pre-finished oak
- Loft floor — 2" x 6" tongue and groove pine
- Round pickets and railings standard
- Shed dormer with full bath in loft
- Exterior stains by Sikken's or Woodguard wood preservers
- M & W 5/8" insulated glass windows
- Interior doors — solid white pine
- Exterior doors — 3/0 wood with glass
- Pine kitchen cabinets
- Laminate counter tops in kitchen
- Heat pump for heating and cooling
- 200 AMP electrical service
- All electrical appliances (range, dishwasher, microwave and refrigerator)
- 50 gallon electric water heater
- Washer and dryer hookup
- Gas fireplace standard
- 8' x 14' treated back decking
- 8' x 38' covered front porch

**Builder Retains the Right to Substitute for Equal or Better Quality.*